

Press Release

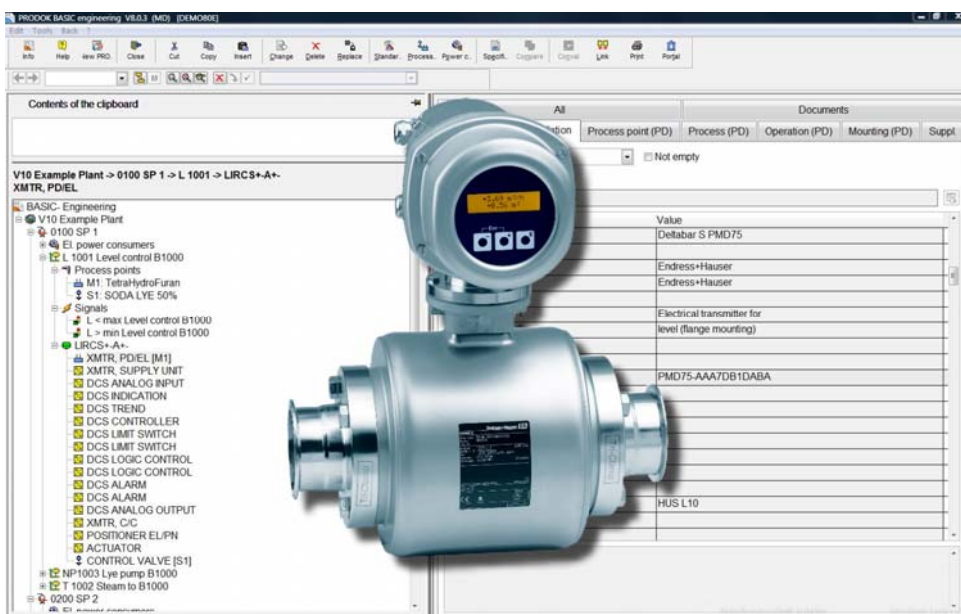
April 2009

Speedy access to equipment data via mouse-click:

Plant Documentation Uses Internet

Plant documentation is never completed – it stays ‘alive’ as long as the plant is in use. Its foundation is laid with the planning, design, manufacture and installation of the plant, but after start-up the data need to be modified and updated every time maintenance, expansion or modernization takes place. Here, electronic planning systems can substantially reduce the workload – and now they even give access to the relevant interfaces, so that users can save time and costs via the Internet.

The I&C CAE system PRODOL from the firm of Rösberg Engineering, Karlsruhe, has proved its worth in many applications. One of its main advantages is its modular structure, which enables it to grow and keep pace with the increasing demands of users. Now PRODOL has been complemented by another interesting function which provides user support in planning and design, maintenance and equipment substitution. One mouse-click on the operating display enables users to call up, via the Internet and the “W@M-Portal” of equipment manufacturer Endress+Hauser, the relevant data not only for the manufacturer’s own products, but also for any item of plant equipment that the user has included in the portal. Thus users can directly access all possible equipment and life-cycle data, operating manuals, safety-related information, lists of replacement parts and order numbers. The online data pool also gives details of compatible successor products. Users can then directly build this information into their planning software and maintenance systems. This saves time, improves the quality of information and eliminates any uncertainty due to communication errors.



A mouse-click on the operating display of the PRODOL plant documentation gives instant online access to comprehensive data and information on Endress+Hauser equipment (photo: Rösberg)

Information:

Roesberg Engineering GmbH

Martin Dubovy

D-76189 Karlsruhe

Phone: +49 721 95018-51

Fax: +49 721 503266

E-Mail: martin.dubovy@roesberg.com

<http://www.roesberg.com>